

DESSERTS

SEASONAL FRUIT PLATE (V) 6

STICKY TOFFEE PUDDING (V) 6.5

TRIO OF ICE CREAM (V) 6

APRICOT & CROISSANT BUTTER PUDDING 6.5

served with vanilla Ice cream

COFFEES

ESPRESSO 2

DOUBLE ESPRESSO 3

SPECIALITY COFFEES 3.5

DIGESTIF

🍸 ESPRESSO MARTINI 16

Ketel One vodka, espresso coffee, Kahlua,
pure cane sugar syrup, coffee beans

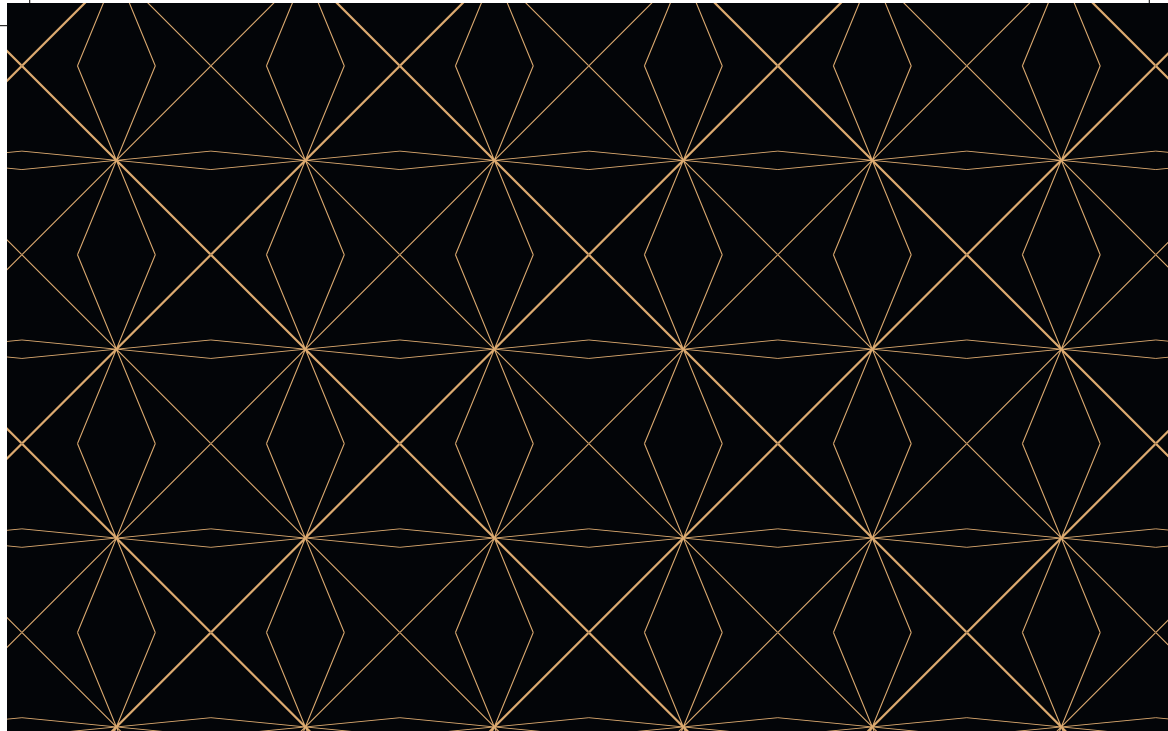
If you have any allergies or dietary requirements, please speak to a member of the team before ordering. Please be aware that traces of allergens used in our kitchen and bar areas may be present, and we cannot guarantee the absence of allergens from our dishes or drink serves. A discretionary 12.5% service charge will be added to your bill.



SCAN TO VIEW
A MENU WITH
CALORIES



2SPR5.DES.SP



THE RESTAURANT

at THE SPORTSMAN

